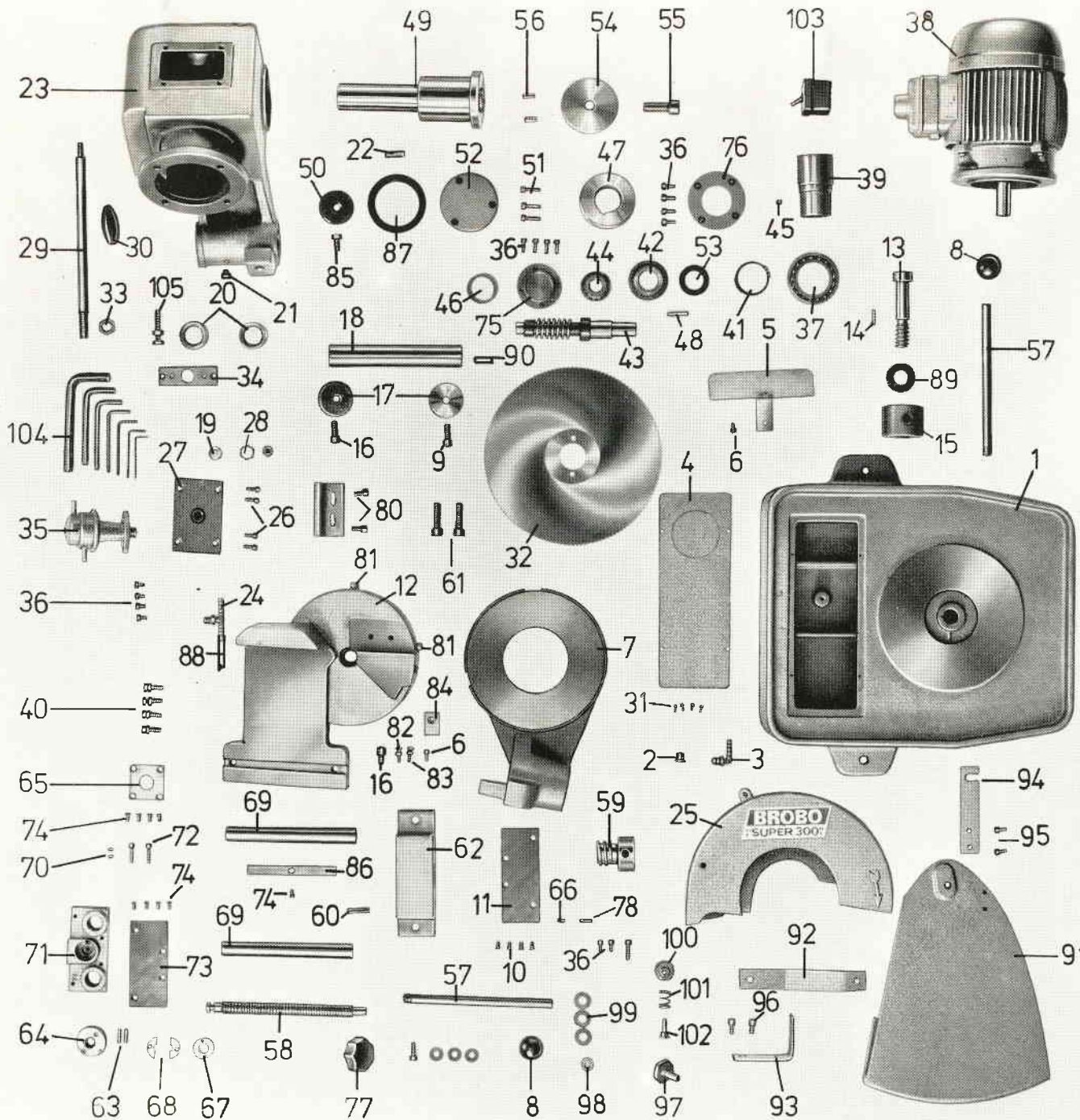


# Parts List Brobo Super 3



- |  |                                     |
|--|-------------------------------------|
| 1. Machine base                        | 84. Sawblade counter-plate          |
| 2. Drain plug R 1/4"                   | 85. Left-hand-screw M 16            |
| 3. Elbow hose nipple WES 1/4"          | 86. Locating plug 6x20 mm           |
| 4. Sump cover                          | 87. Base pivot handle               |
| 5. Sump filter                         | 88. Vice screw                      |
| 6. Socket head cap screw M 6 x 12      | 89. Quick action nut                |
| 7. Pivot ring                          | 90. Tension pin 8 x 30 mm           |
| 8. Plastic knob                        | 91. Socket head cap screw M 10 x 25 |
| 9. Socket head cap screw M 10 x 25     | 92. Vice block                      |
| 10. Countersunk screw M 10 x 16        | 93. Compression spring              |
| 11. Fixed vice plate                   | 94. Vice nut                        |
| 12. Pivot vice base                    | 95. Retaining plate                 |
| 13. Swivel pivot screw                 | 96. Tension pin 6 x 12 mm           |
| 14. Locating pin 5 x 24 mm             | 97. Locking plate                   |
| 15. Lock nut                           | 98. Split brass washer              |
| 16. Socket head cap screw M 10 x 16    | 99. Guide bar for vice              |
| 17. Locking plate                      | 100. Set screw M 6 x 8              |
| 18. Pivot shaft                        | 101. Vice jaw casting               |
| 19. Oil inspection window R 3/8"       | 102. Socket head cap screw M 6      |
| 20. Bronze bush                        | 103. Moving vice plate              |
| 21. Grease nipple 6 mm                 | 104. Countersunk screw M 6 x 12     |
| 22. Feather key 10 x 8 x 32 mm         | 105. Bearing cover plate            |
| 23. Gear box                           | 1. Interior cover plate             |
| 24. Intermediate hose nipple           | 2. Star handle 63 x 12 mm           |
| 25. Sawblade guard                     | 3. Tension pin 4 x 22 mm            |
| 26. Countersunk screw M 6 x 12         | 4. Right-hand material stop an      |
| 27. Top cover plate                    | 5. Socket head cap screw M 8        |
| 28. Filler plug R 3/8"                 | 6. Socket head cap screw M 8        |
| 29. Gear box handle                    | 7. Hexagon Head screw M 6 x         |
| 30. Convex knob M 12                   | 8. Hexagon nut M 6                  |
| 31. Socket head cap screw M 4 x 8      | 9. Pivot stopper                    |
| 32. Sawblade 300 x 2,5 x 38 HSS        | 10. "Tensiloc" screw M 10 x 20      |
| 33. Hexagon nut M 16                   | 11. Vice guide key 6 x 14 x 140 mm  |
| 34. Mounting plate for pump            | 12. Oil-seal ring BA 70 x 90 x 10   |
| 35. Pump F 0165263 (Ford)              | 13. Plastic hose 1/4"               |
| 36. Socket head cap screw M 6 x 16     | 14. Plate spring 45 x 22,5 x 1,5 mm |
| 37. Deep groove ball bearing SKF 16010 | 15. Tension pin 3 x 12 mm           |
| 38. Motor                              | 16. Safety guard                    |
| 39. Coupling                           | 17. Strap for guard linkage         |
| 40. Hexagon head screw M 8 x 25        | 18. Angle for guard linkage         |
| 41. Locking ring 50 x 2 mm             | 19. Angle strap for linkage         |
| 42. Taper roller bearing SKF 30206     | 20. Socket head cap screw M 6       |
| 43. Wormshaft                          | 21. Socket head cap screw M 6       |
| 44. Taper roller bearing SKF 30204     | 22. Screw SW 36                     |
| 45. Set screw M 8 x 10                 | 23. Safety nut M 12                 |
| 46. Counterbalance plate               | 24. Plate spring 28 x 12 x 1 mm     |
| 47. Wormwheel                          | 25. Knurled nut M 8                 |
| 48. Feather key 8 x 7 x 32             | 26. Compression spring              |
| 49. Main spindle                       | 27. Screw M 8                       |
| 50. Retainer                           | 28. Motor switch                    |
| 51. Socket head cap screw M 6 x 25     | 29. Set operating keys              |
| 52. Cover plate                        | 30. Tilt stop screw M 10 x 50       |
| 53. Oil-seal ring BA 30 x 47 x 7 mm    |                                     |